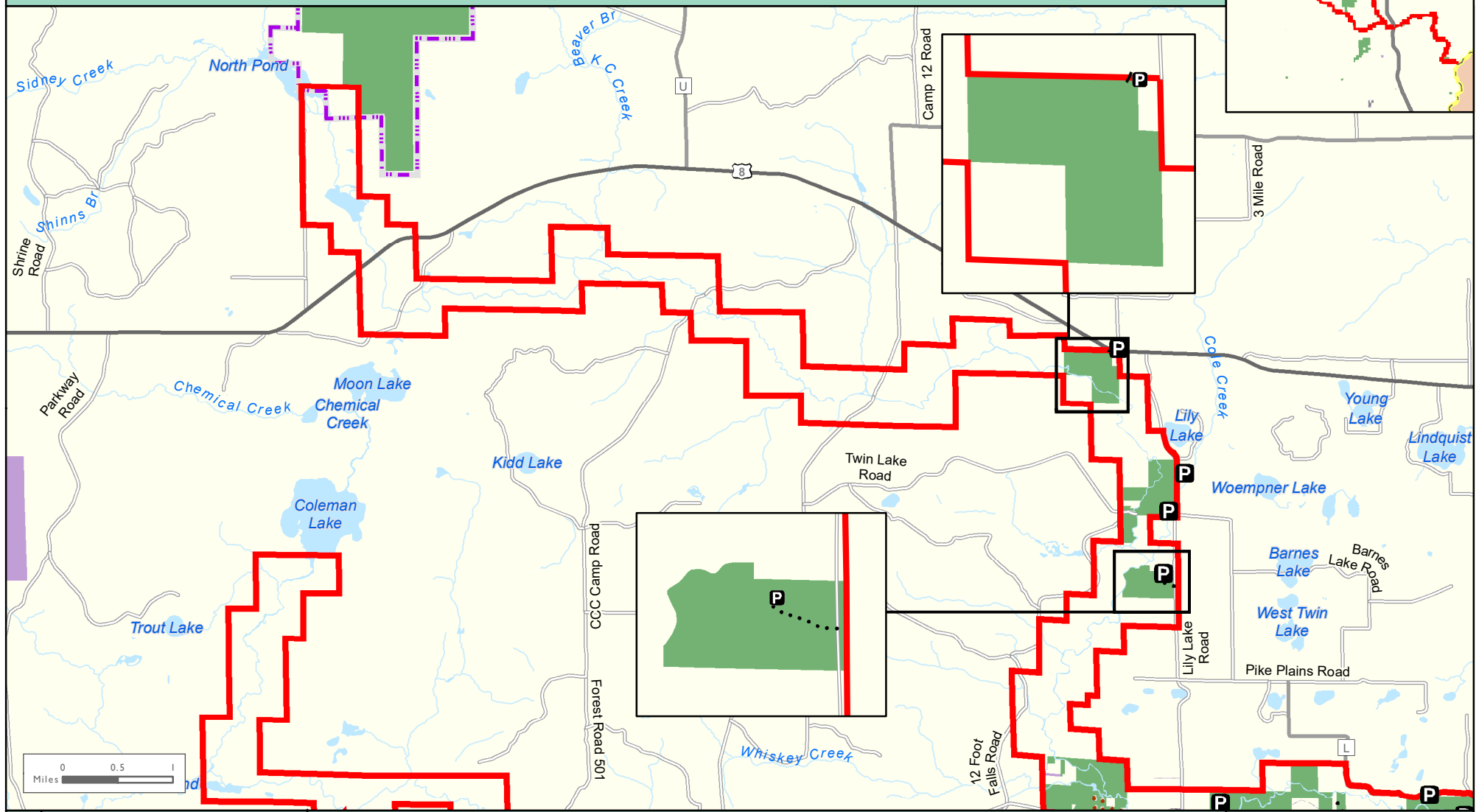
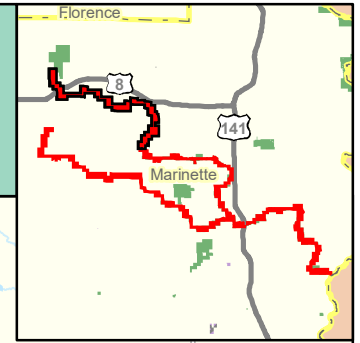


# PIKE WILD RIVER

## EXISTING ROAD INFRASTRUCTURE

Northeast Sands Ecological Landscape

DRAFT



MAP 1-1A

### Project Boundary

- Pike Wild River
- Dunbar Barrens State Natural Area

### DNR Fee Title

- DNR Fee Title
- DNR Easement

- DNR Easement (Closed to Public Access)

- Parking Lot

### DNR Roads Key

#### NR 44 Road Classification

- Lightly-developed Road
- Primitive Road

#### Motorized Public Use

- Open = **Black**
- Closed = **Red**

WISCONSIN DEPARTMENT OF NATURAL RESOURCES



Bureau of Facilities and Lands  
Jul 02, 2019

EL-NES-1955-11A keg

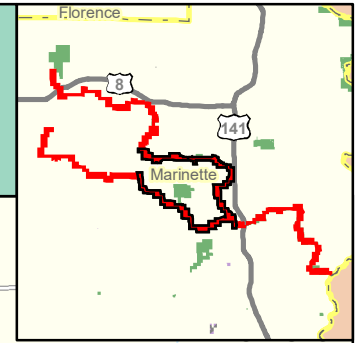
**MAP 1-1A**

The data shown on this map have been obtained from various sources, and are of varying age, reliability and resolution. This map is not intended to be used for navigation, nor is this map an authoritative source of information about legal land ownership or public access. Users of this map should confirm the ownership of land through other means in order to avoid trespassing. No warranty, expressed or implied, is made regarding accuracy, applicability for a particular use, completeness, or legality of the information depicted on this map.

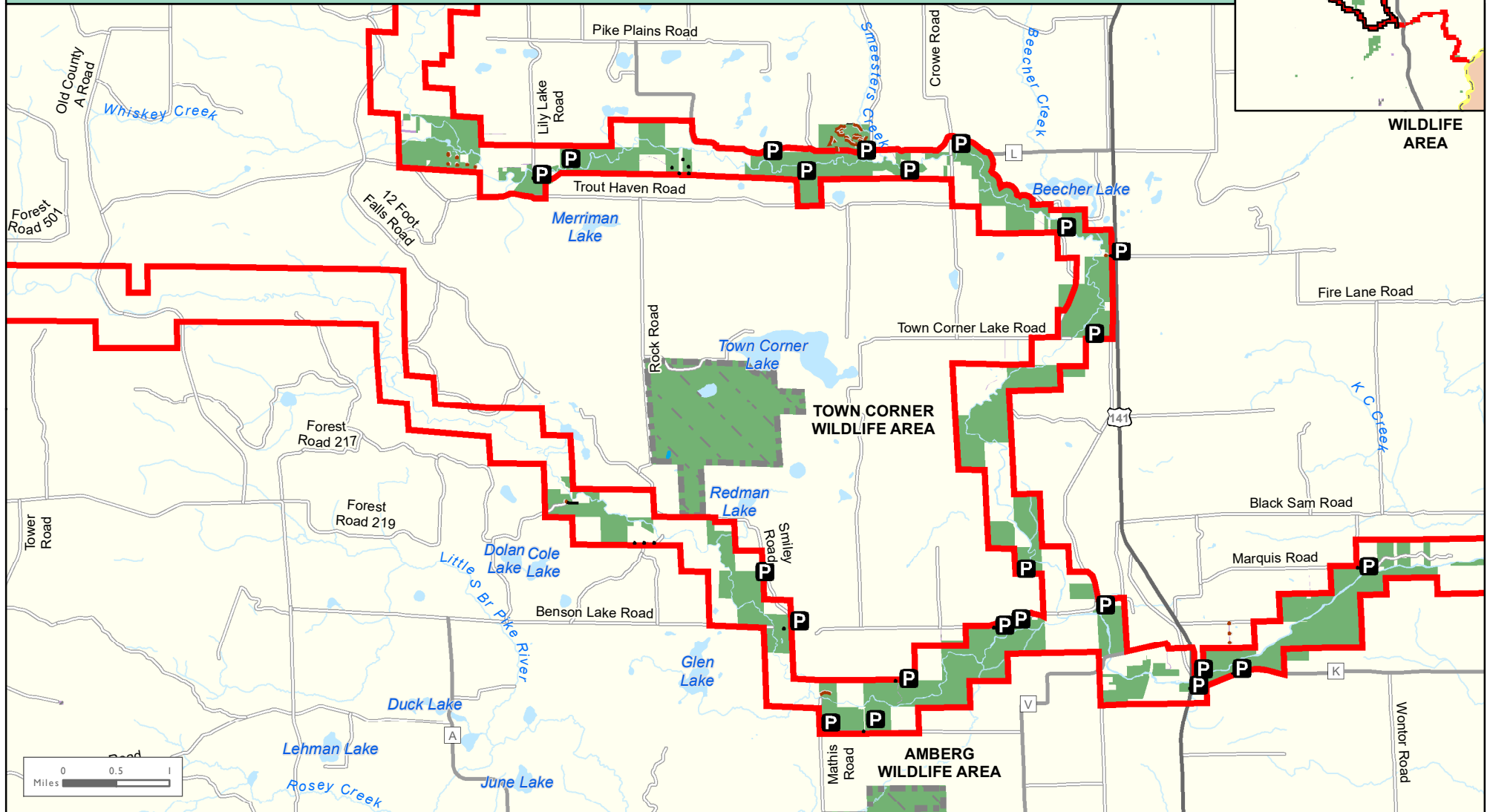
# PIKE WILD RIVER EXISTING ROAD INFRASTRUCTURE

Northeast Sands Ecological Landscape

DRAFT



WILDLIFE AREA



MAP I-1B

**Project Boundary**

- Pike Wild River
- Other Project Boundary

- DNR Fee Title
- DNR Easement
- DNR Easement (Closed to Public Access)

Parking Lot

**DNR Roads Key**

- NR 44 Road Classification**
- Lightly-developed Road
  - Primitive Road
- Motorized Public Use**
- Open = **Black**
  - Closed = **Red**

WISCONSIN DEPARTMENT OF NATURAL RESOURCES

Bureau of  
Facilities and Lands  
Jul 02, 2019

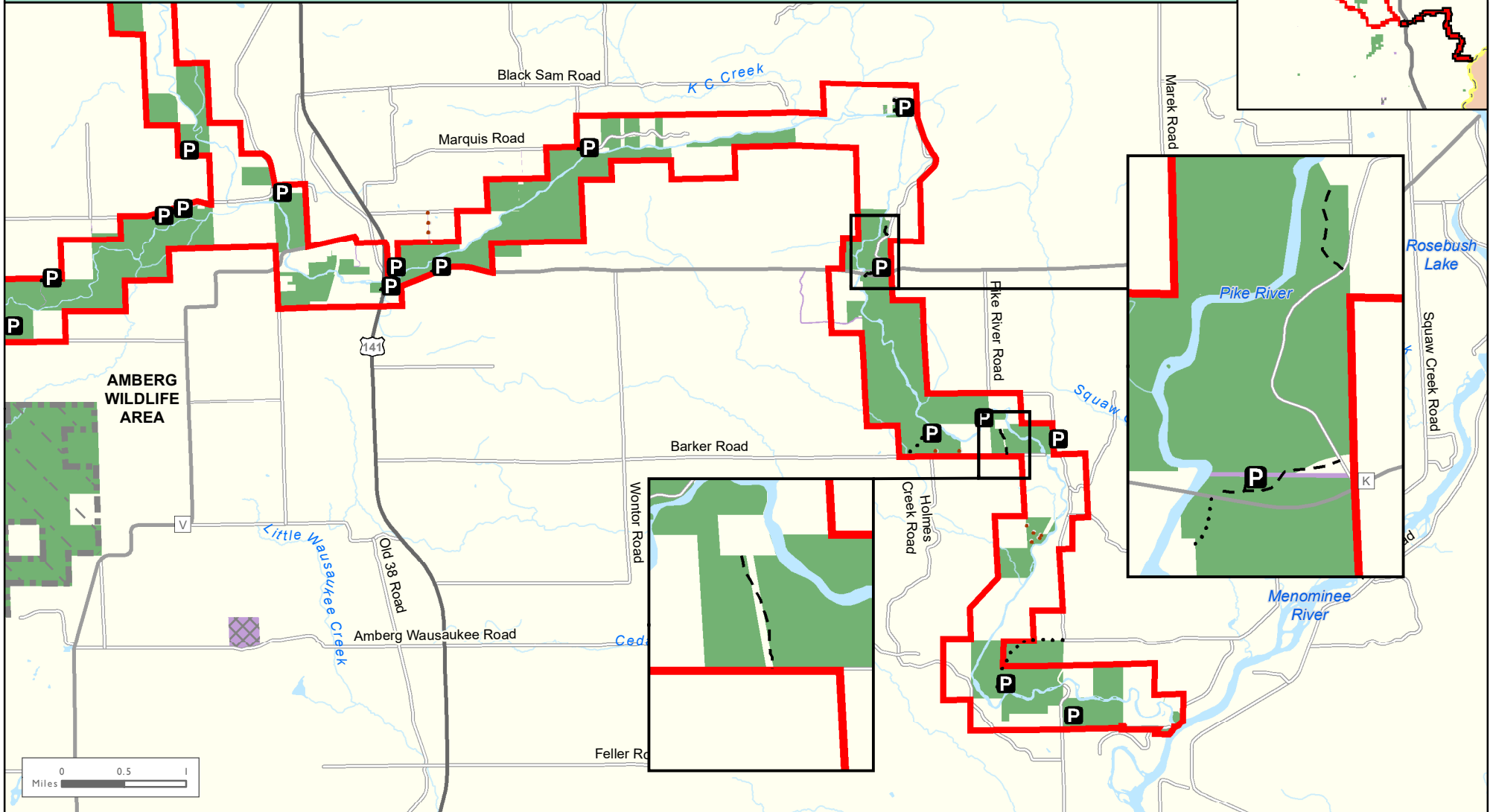
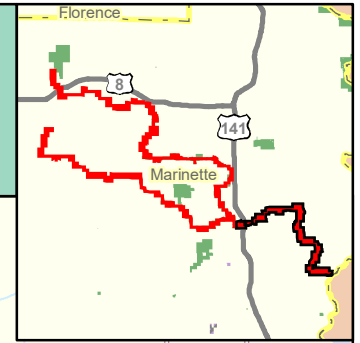
EL-NES-1955-11B keg  
**MAP I-1B**

The data shown on this map have been obtained from various sources, and are of varying age, reliability and resolution. This map is not intended to be used for navigation, nor is this map an authoritative source of information about legal land ownership or public access. Users of this map should confirm the ownership of land through other means in order to avoid trespassing. No warranty, expressed or implied, is made regarding accuracy, applicability for a particular use, completeness, or legality of the information depicted on this map.

# PIKE WILD RIVER EXISTING ROAD INFRASTRUCTURE

Northeast Sands Ecological Landscape

DRAFT



MAP I-IC

### Project Boundary

- Pike Wild River
- Other Project Boundary

- DNR Fee Title
- DNR Easement
- DNR Easement (Closed to Public Access)

Parking Lot

### DNR Roads Key

- #### NR 44 Road Classification
- Lightly-developed Road
  - Primitive Road

- #### Motorized Public Use
- Open = **Black**
  - Closed = **Red**

WISCONSIN DEPARTMENT OF NATURAL RESOURCES



Bureau of  
Facilities and Lands  
Jul 02, 2019

EL-NES-1955-11C keg

**MAP I-IC**

The data shown on this map have been obtained from various sources, and are of varying age, reliability and resolution. This map is not intended to be used for navigation, nor is this map an authoritative source of information about legal land ownership or public access. Users of this map should confirm the ownership of land through other means in order to avoid trespassing. No warranty, expressed or implied, is made regarding accuracy, applicability for a particular use, completeness, or legality of the information depicted on this map.