

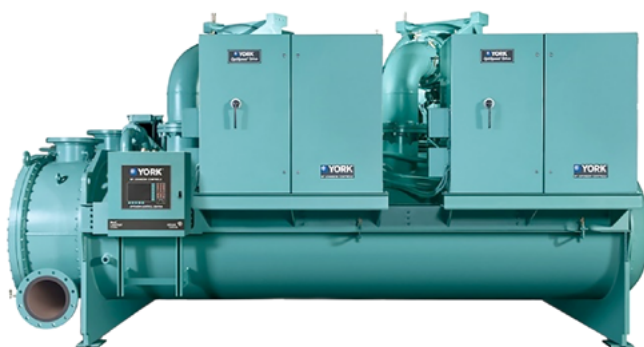
Quick Start for YORK® YD

Fast restart and load recovery at the highest capacities



Designed for critical applications

It is essential to maximize chiller uptime for mission critical, temperature sensitive applications. Data centers, district cooling plants, hospitals, and other high value connected loads face a 24/7/365 threat of violating service level agreements, equipment failures, and lost production which costs money. Owners and operators must have confidence in the equipment serving their process.



YORK® water-cooled dual centrifugal compressor YD chiller offers cooling capacity ranging from 1,500 to 6,000 tons (5,300 to 21,100 kW)



Reduce the risk of cooling disruption

Available as an option on YORK® YD chillers with Variable Speed Drives (VSD), the **Dual Mode Quick Start** feature saves time and expense by:

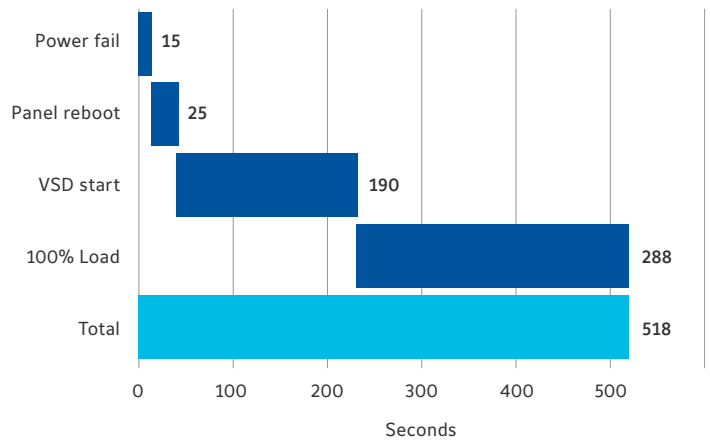
- Eliminating the need for an uninterruptable power supply because of fast control panel reboot time
- Rapidly loading the chiller to meet the required cooling demand which allows smaller buffer tanks
- Keeping critical space and equipment cool which reduces the risk of downtime, penalties, lost production, scrap, or damage to temperature sensitive equipment

Faster Restarts, Faster Loading

Not only will your YD chiller restart quickly, it will meet the required cooling demand faster. Based on the operating condition before a power failure, YD can reach full load in as little as 9 minutes with **Dual Mode Quick Start** – Performance on par with YORK® YK centrifugal chillers. Factors that can alter time to full load include:

- Specific chiller configuration
- Operating conditions
- Duration of the power failure

A demonstration test can be witnessed to see how your particular chiller behaves after cycling the power supply. Customers are encouraged to specify the operating conditions and duration of the power outage to simulate specific site conditions.



Example of restart and capacity recovery time for a YD chiller after 15 second power failure

For details on a YD chiller with the Dual Mode Quick Start feature, or to learn more about other Quick Start feature offerings, contact your local Johnson Controls branch today, or visit www.johnsoncontrols.com/chillers.

Johnson Controls is a global leader creating a safe, comfortable and sustainable world. Our 105,000 employees create intelligent buildings, efficient energy solutions and integrated infrastructure that work seamlessly together to deliver on the promise of smart cities and communities in 150 countries. Our commitment to sustainability dates back to our roots in 1885, with the invention of the first electric room thermostat. We are committed to helping our customers win everywhere, every day and creating greater value for all of our stakeholders through our strategic focus on buildings.

For additional information, please visit www.johnsoncontrols.com or follow us [@johnsoncontrols](https://twitter.com/johnsoncontrols) on Twitter.