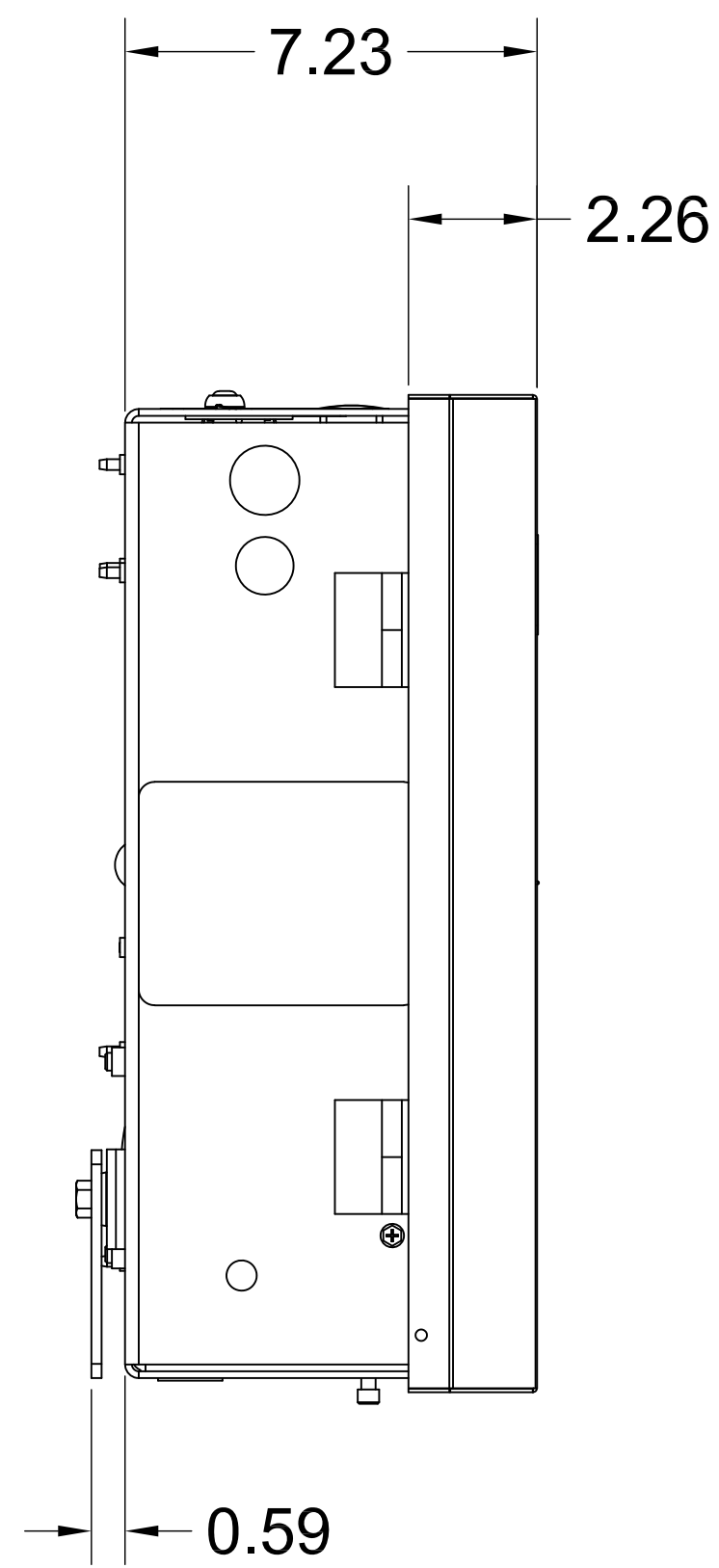
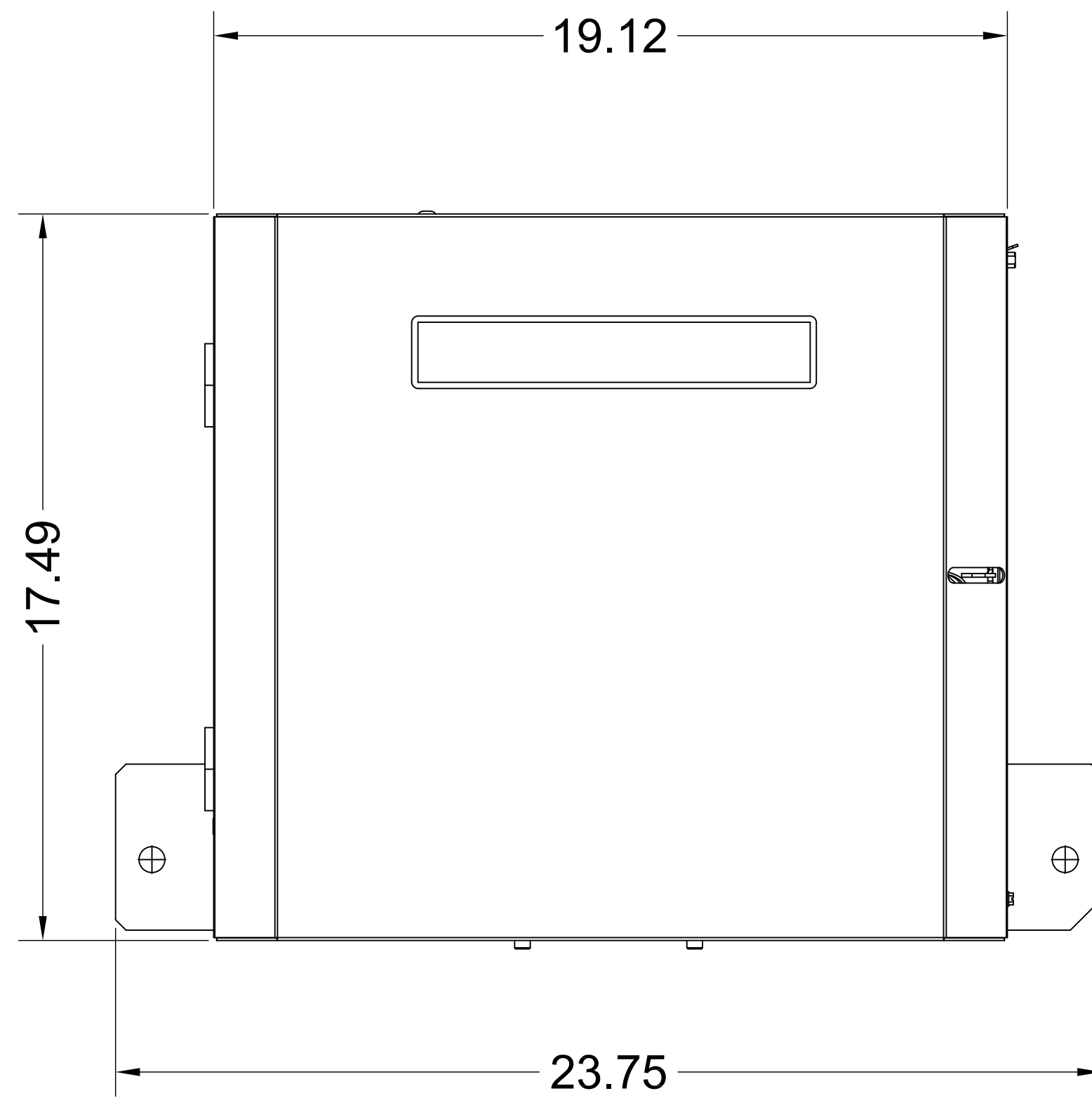


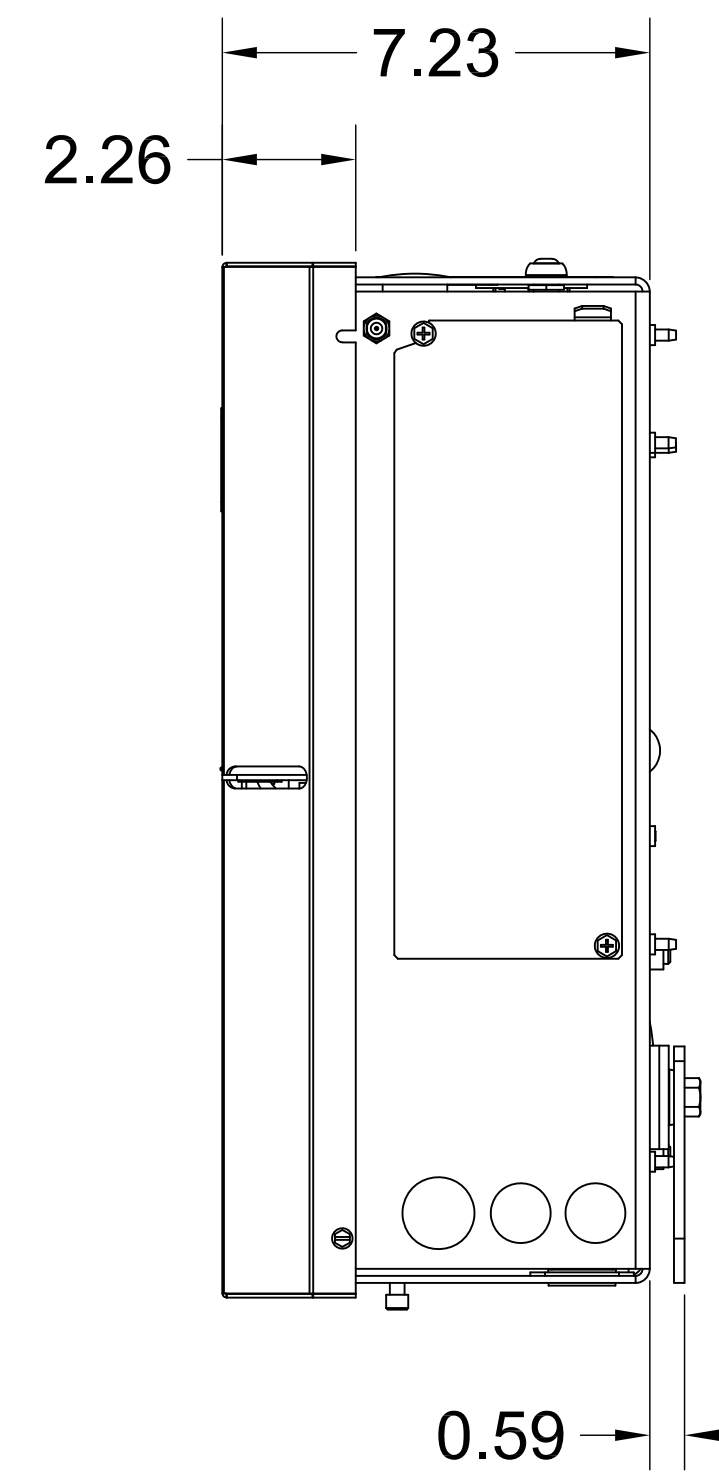
TOP VIEW



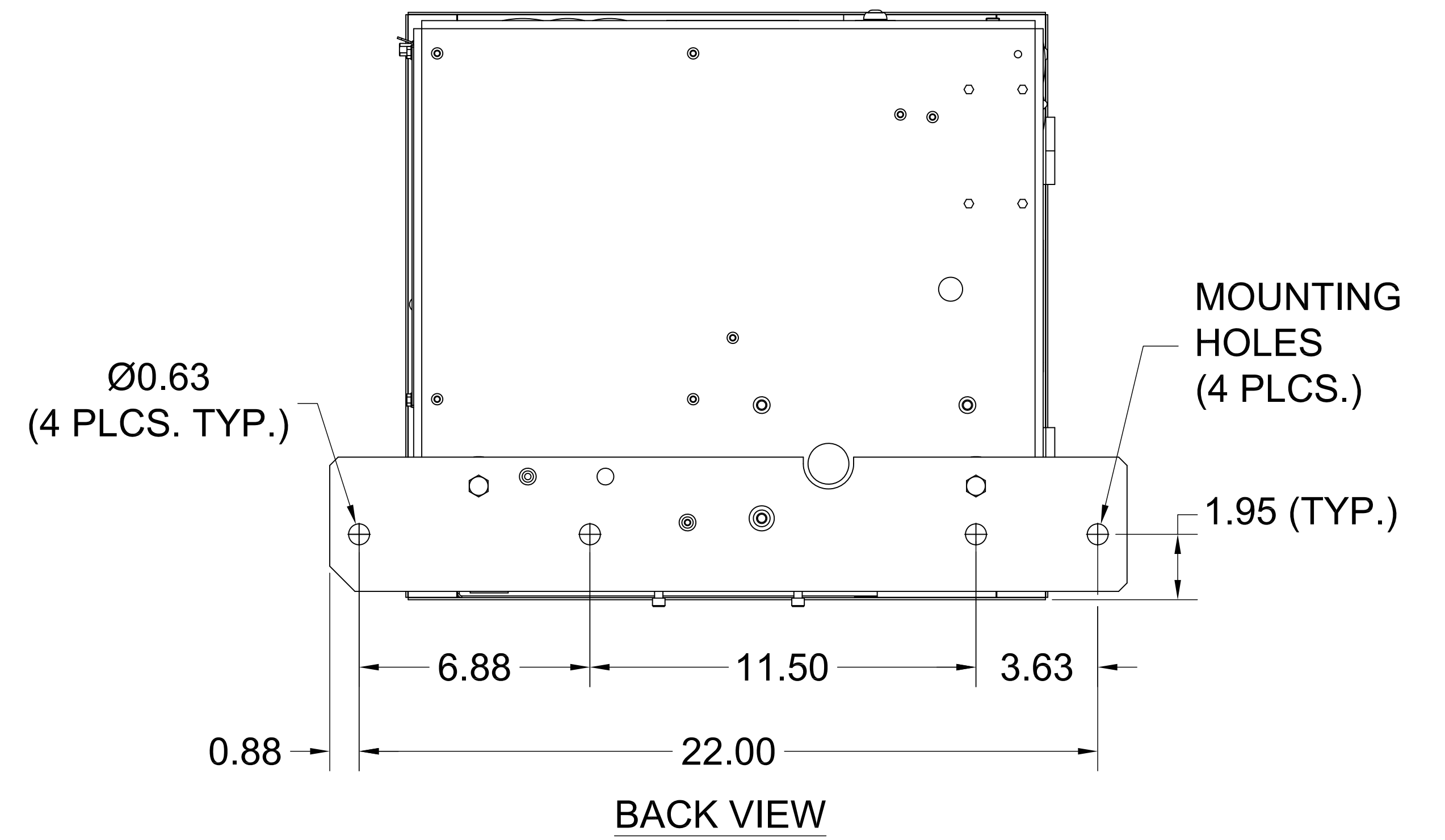
LEFT VIEW



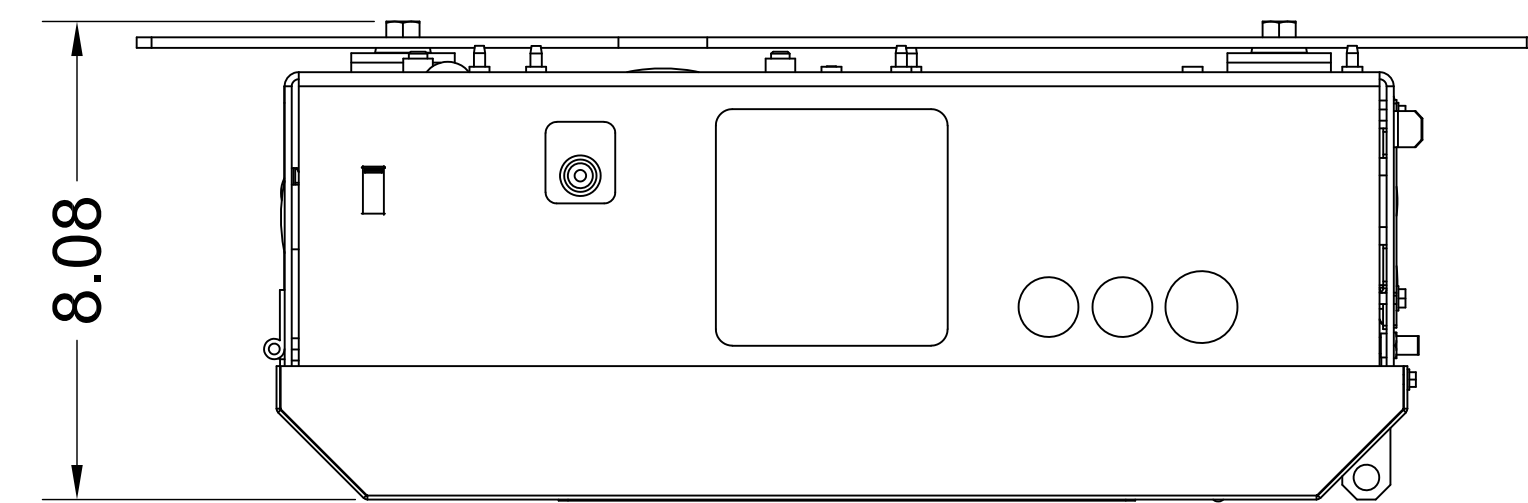
FRONT VIEW



RIGHT VIEW



BACK VIEW



BOTTOM VIEW

(HCTDCU) 24VDC HIGH-TRAFFIC  
OVERHEAD DOOR AND GATE OPERATOR

|   |                         |  |
|---|-------------------------|--|
| <b>LiftMaster</b><br>LIFTMASTER (CHAMBERLAIN GROUP, INC.)<br>ENGINEERED SERVICES                      |                         | 300 WINDSOR DR.<br>OAK BROOK, IL 60523<br>PHONE: (630) 418-6516<br>FAX: (630) 516-7059 |
|   |                         | SHEET NO:<br><b>1/1</b>  |
| DRW. BY: B. MOFFETT<br>DATE: 07/16/2019<br>TITLE: HCTDCU OVERHEAD DOOR & GATE OPERATOR<br>CAD FILE: - | REVISION:<br>SCALE: NTS |  |